



# *Joint Health Overview Scrutiny*

## *Committee*

### *Leicestershire County Council, Leicester City Council and Rutland County Council*



**JOINT COMMITTEE**  
**COUNTY 7: CITY 7: RUTLAND 2:**  
**(SCRUTINY OF HEALTH BODIES WITH**  
**STRATEGIC AND COUNTY-WIDE**  
**RESPONSIBILITIES)**

**COUNTY COUNCIL'S HEALTH**  
**SCRUTINY COMMITTEE**  
**7 COUNTY MEMBERS**  
**1 RUTLAND MEMBER**

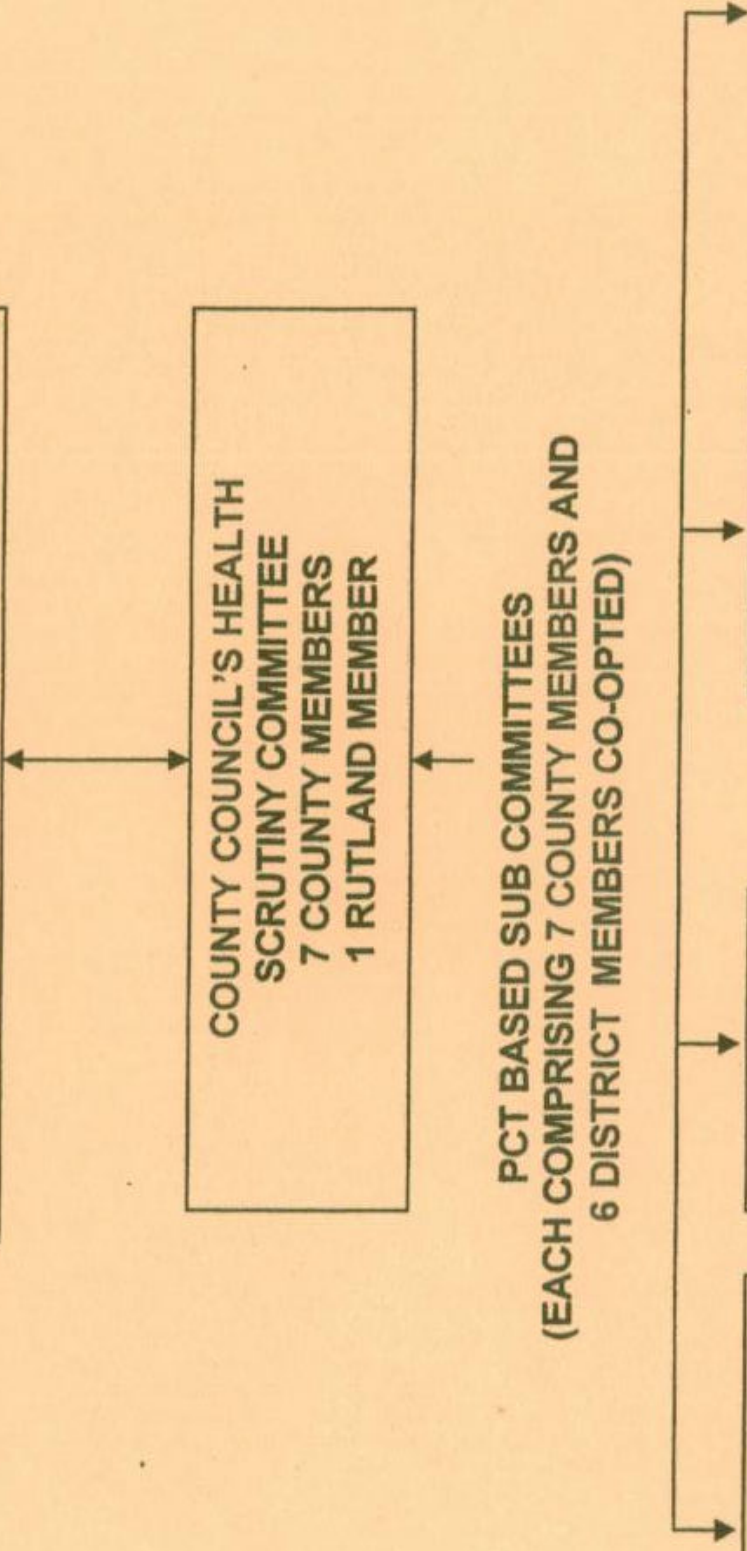
**PCT BASED SUB COMMITTEES**  
**(EACH COMPRISING 7 COUNTY MEMBERS AND**  
**6 DISTRICT MEMBERS CO-OPTED)**

**Charnwood &**  
**North West**  
**Leicestershire**

**Hinckley and**  
**Bosworth**

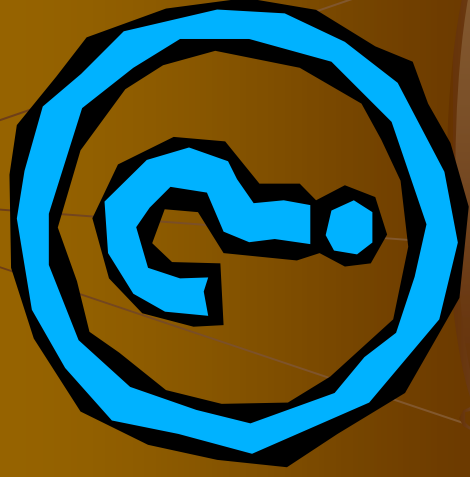
**Melton Rutland**  
**Harborough**

**South**  
**Leicestershire**

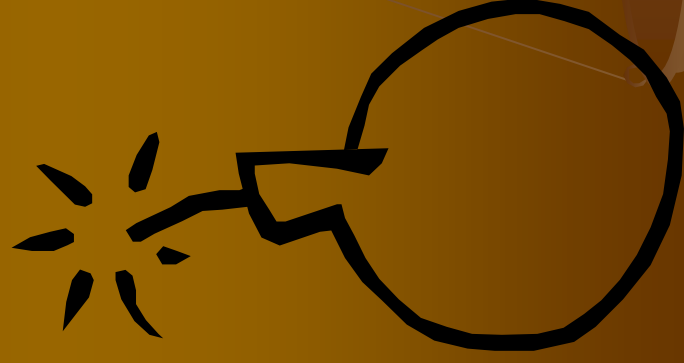


- 
- Chairman Dave Houseman,  
Leicestershire County Councillor
  - Vice Chairman Paul Westly, Leicester  
City Councillor

*Scrutiny of University Hospitals Leicester  
application for Foundation Trust status*

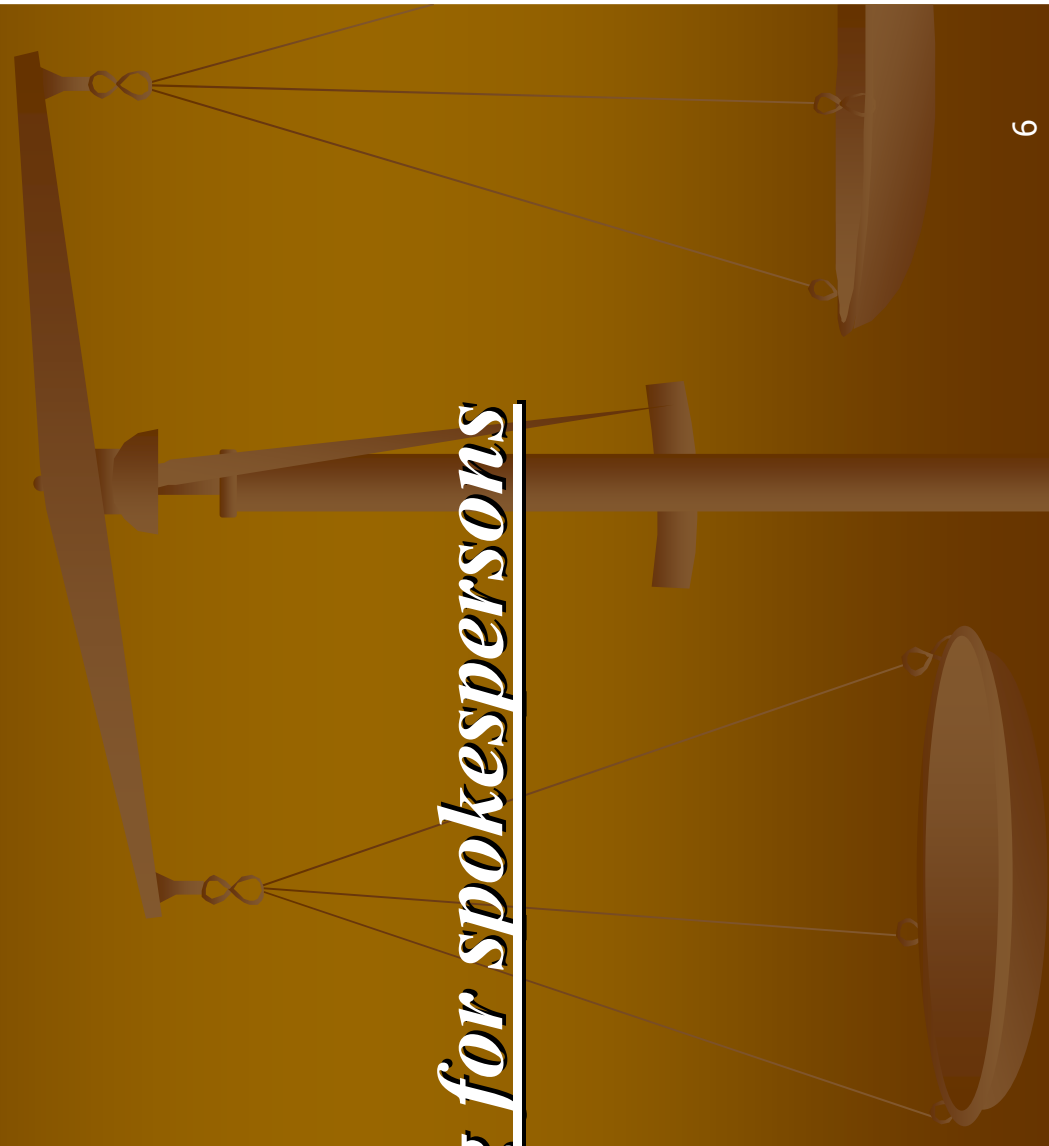


*Application involved submission of an  
Integrated Business Plan for  
consideration and approval by the  
Secretary of State for Health*



*Joint Health Overview & Scrutiny  
Committee*

*Briefing for spokespersons*

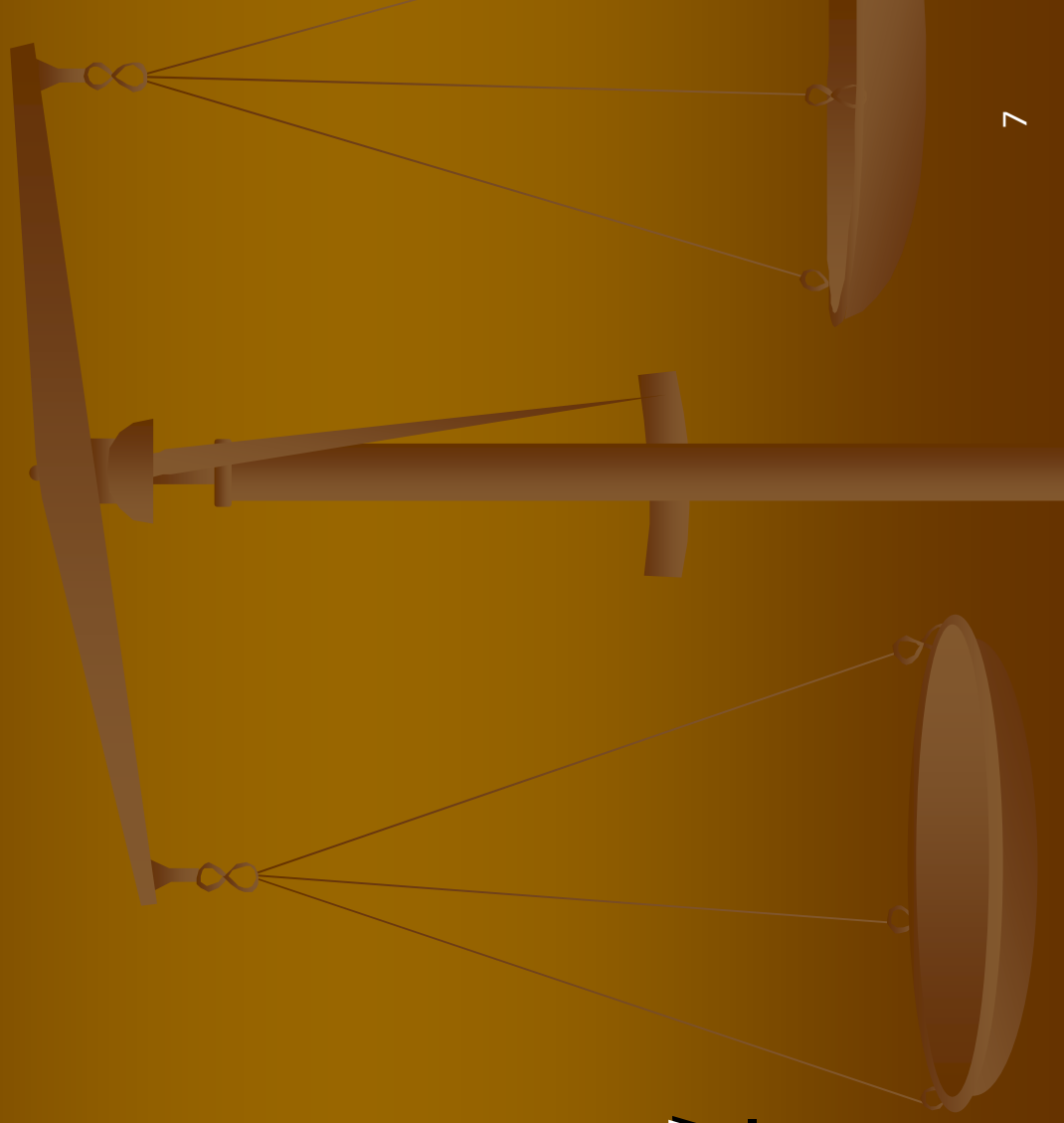


■ *It was agreed that training was needed to understand the key areas of concern*

■ *Social*

■ *Economic*

■ *Environmental*



- 
- *Transparency in Governance?*
  - *Effects on the Local Health Economy?*
  - *Why are the UHLL Trust applying for Foundation Trust status?*
  - *What are the benefits and the downside?*



## Consultation with local people & workforce

- Do they want this?
- What interest in there in being a member of the Members' Council?
- Assurance on Finance?
- Has a thorough risk assessment been done including the costs?



■ Scrutiny Review of the FT application  
from University Hospital, Birmingham

■ Report of the University College of  
London Hospitals NHS FT Review  
Scrutiny Panel (Borough of Camden)



- *Review of NHS Foundation Trusts from  
the Department of Health (published  
5.7.05)*



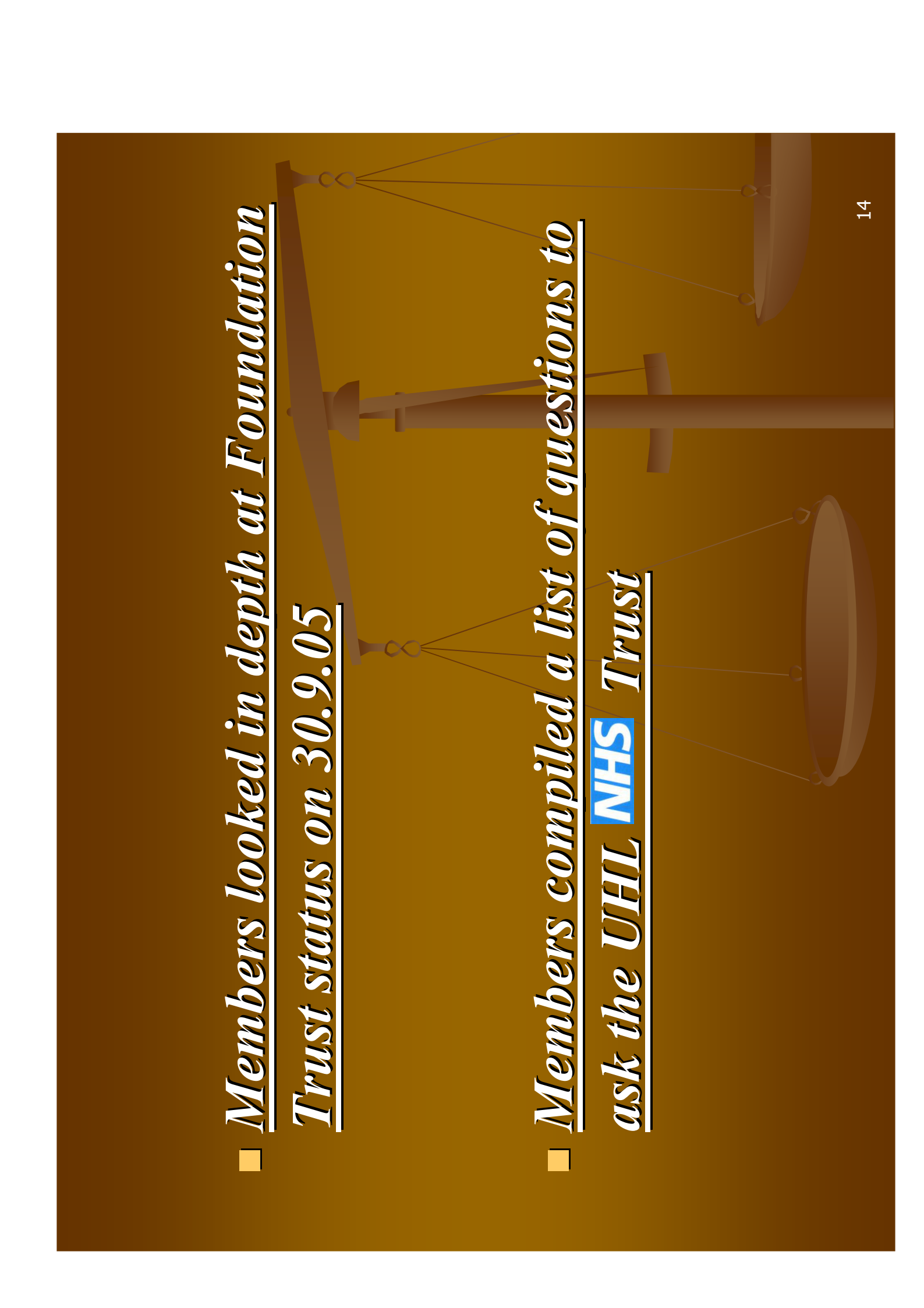
Officers sourced a NHS Foundation Trust  
specialist trainer from the CfPS

*Joint Health Overview & Scrutiny  
Committee members attended a training*

*event*

*Trainer Cllr Rachel Harris. BA (Hons)*  
*was recommended by the IDeA through*

*the CfPS*



- Members looked in depth at Foundation Trust status on 30.9.05

- Members compiled a list of questions to ask the UHL **NHS** Trust

*Officers forwarded these questions to the*

*UHL NHS Trust.*

# *Joint Health Overview & Scrutiny Committee briefing for spokespersons.*

4.10.05.



*Officers also updated members on  
Foundation trust guidelines and  
legislation*

*Joint Health Overview & Scrutiny  
Committee meeting. 4.10.05*

*Presentation by UHL Trust and replies  
given to the written questions  
Councillors asked for clarification of for  
example the COG –Members’ Council -  
elected and nominated members*

*After this meeting Officers were asked to forward additional written questions to the*

*UHL Trust*

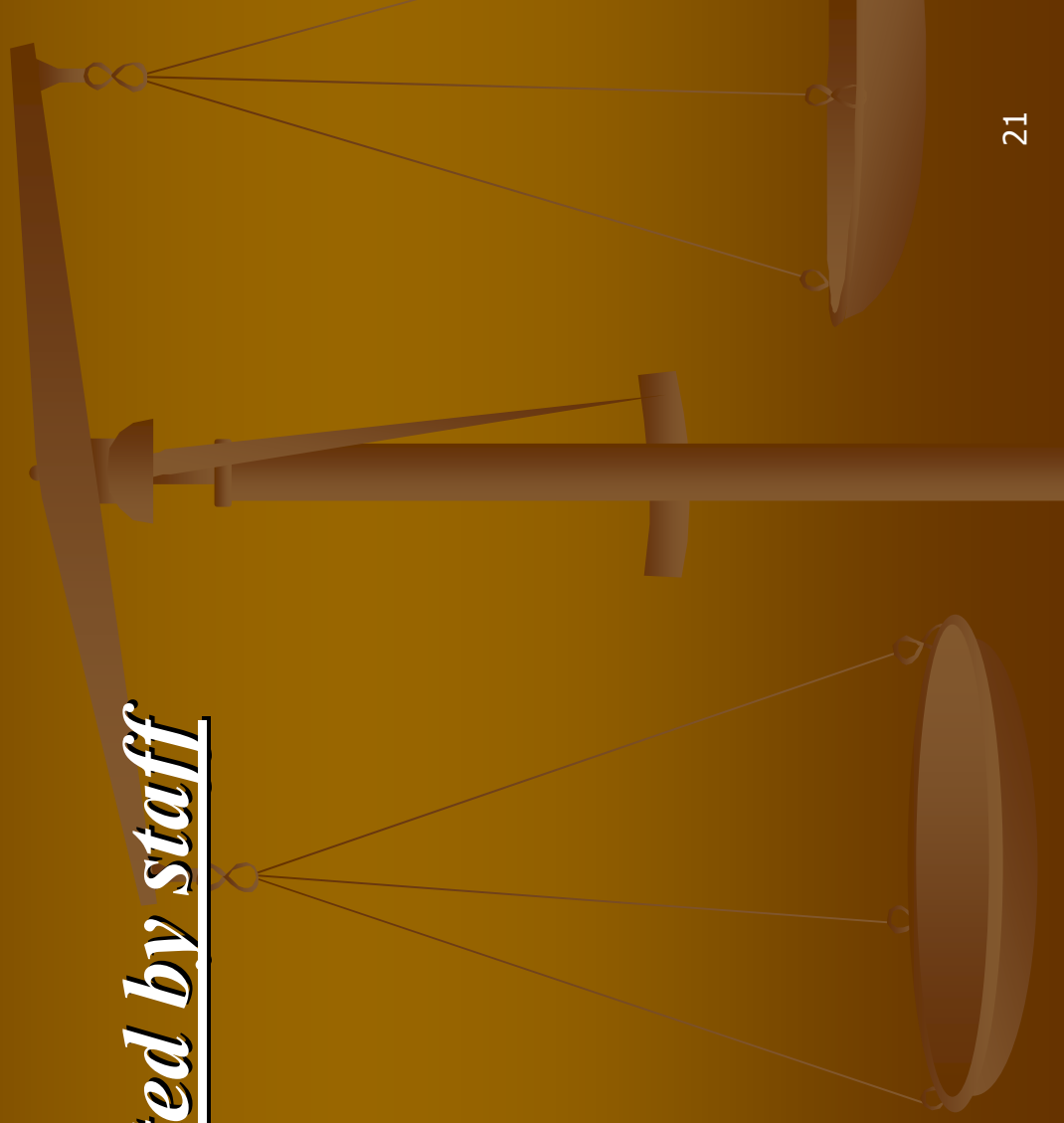
*and invite*

*Staff Union and user representatives to the next meeting on 9.11.05*

*Joint Health Overview & Scrutiny  
Committee meeting 9.11.05.*

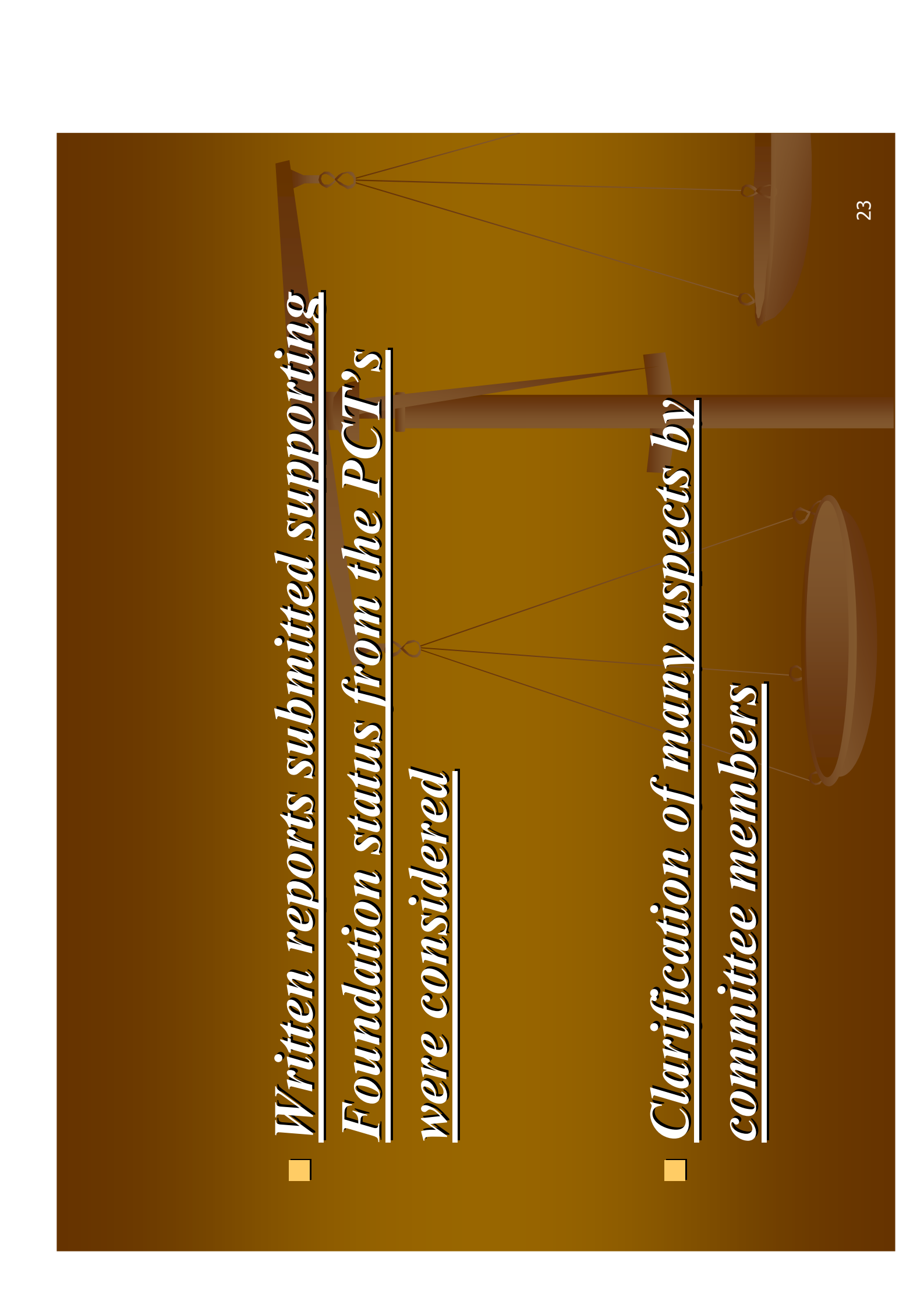
*Presentation by UHL Trust and replies  
given to the written questions*

- *Views of staff*  
*Unions presented by staff*  
*representatives*





- *Views of patients represented by Patient & Public Involvement Forum (PPIF) Chairman*



- *Written reports submitted supporting Foundation status from the PCT's were considered*

- *Clarification of many aspects by committee members*



*Final outcome - see report dated 11.11.05*

*Thank you for your time.*

*Any questions?*